



ES  
TD

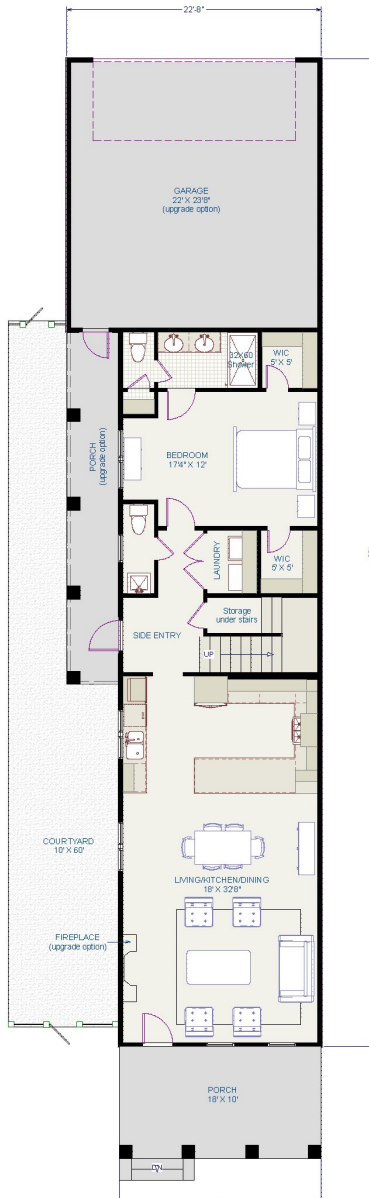
20  
24

# THE RESIDENCES *At Oakleigh*

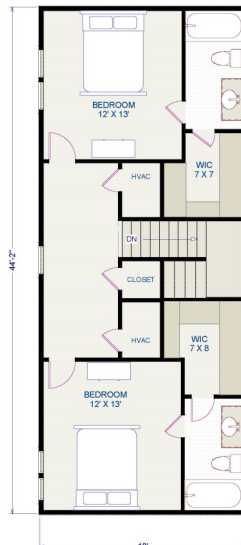
A NEW LUXURY RESIDENTIAL DEVELOPMENT  
NESTLED IN THE HEART OF THE HISTORICAL  
OAKLEIGH GARDEN DISTRICT

*Luxe Leisure*

*Mobile AL*



FIRST FLOOR



SECOND FLOOR

## BIENVILLE

3 BED, 3.5 BATH

First Floor	1,152 SF
Second Floor	795 SF
<b>TOTAL</b>	<b>1,947 SF</b>

- 10 ft Front Porch
- Two Parking Spaces
- 10 ft Ceilings 1st Floor
- 9 ft Ceilings 2nd Floor
- Courtyard

- Garage (optional upgrade)
- Fireplace (optional upgrade)